

# About Us

## Message from the President



### **Connect, Create, Serve: Our Motto for Exploring and Tackling New Challenges in Society and the Living Spaces of Tomorrow**

Established in 1961 as a trading company with a focus on construction materials, Itochu Kenzai Corporation has since used its forward-thinking vision to develop into a leading company in the industry and a provider of diverse value, primarily in the housing sector. On July 1, 2011, we commemorated our 60th anniversary.

The motto that guides us in our actions as a company is based on three key words: Connect, Create, and Serve.

"Connect" expresses our role as a trading company with a focus on midstream business, helping to connect suppliers and buyers.

"Create" symbolizes our creation of new businesses focused on the needs of our customers, and our cultivation of new functions and value in the distribution of construction materials.

"Serve" represents our unwavering commitment to continually meeting the expectations of our customers, suppliers, employees and society as a whole.

With Japan's declining birthrate and aging population, long-term trends suggest that we are unlikely to see significant growth in the number of new housing projects going forward. However, from the qualitative point of view of housing, energy conservation, energy creation, and energy storage are becoming more important in Japan, a country which aims to create a decarbonized society. The need for safe and secure homes that can withstand natural disasters such as earthquakes and flood damage is also increasing. Comfortable homes with the latest cutting-edge home equipment are also becoming more widespread. I believe that in the future, the quality of housing will continue to improve.

It is our mission to recognize these kinds of changes as business opportunities, and provide products and new business functionality to cater to the needs of customers.

Our strengths include our access to a wealth of information supported by the combined strength and network of the ITOCHU Group, as well as our solid trusting relationships with around 1,600 customers across Japan. Moving forward, we stand firmly committed to taking on the unique challenges in the housing sector of tomorrow as only the Itochu Kenzai Corporation can.

**Hiroshi Sekino**  
President and Chief Executive Officer

# Corporate Vision

## Our Mission

**Significance of Existence** — Defines our commitment and universal promise to greater society.

**Pursue all possibilities found in people, companies, commodities and services relating to living spaces. Provide new values and affluence to places where people live.**

## Our Vision for the Future

**Corporate Vision** — Defines the targets we must fulfill in order to achieve our mission. This vision extends 10 years into the future.

### For Our Business Partners

Leverage Itochu Kenzai Corporation's access to dynamic information, bold and assertive actions and extensive Group network to create the businesses of tomorrow.

### For Society

Connect and serve the varying needs of humankind and the planet globally to help improve the earth's environment and enhance living spaces.

### For Our Employees

Foster a corporate culture that values new ideas and solutions as well as empowers all employees to tackle the challenges of tomorrow.

## Way: Our Plan of Action

**Action Plan** — Defines the fundamental actions required to achieve our vision.

### Connect

Connect our business partners, ideas and markets, people and people as well as today and the future.

### Create

Create the new businesses of tomorrow, new possibilities for construction materials, new values, and people.

### Service

Serve needs, expectations, trust and society's requests.

## Our Values

**Values and Decision-making Criteria** — Defines the core corporate culture and values that must be shared with employees to achieve our vision.

### Creativity

- Inventiveness that leads to new discoveries
- Sensibility that depicts new possibilities and the future
- Flexible thinking abilities grounded in wide-reaching perspectives

### Passion

- Strong aspirations unsatisfied with the status quo
- Strong mental fortitude to face and solve challenges
- The ability to take action and continually tackle changes while being unafraid of change

### Commitment

- An honesty and integrity that is always thankful
- Highly esteemed ethical values as a member of the ITOCHU Group

# Corporate Profile

## Corporate Profile (June 27 2024)

<b>Name</b>	ITOCHU KENZAI CORPORATION
<b>Headquarters</b>	7F, Nomurafudosan Nihonbashi-Odemmacho Bldg., 1-4 Nihonbashi-Odemmancho, Chuo-ku, Tokyo 103-8419, Japan TEL.03-3661-3281 FAX.03-5695-7582
<b>Founded</b>	July 1, 1961
<b>Capital</b>	Paid up 500 Million
<b>Shareholders</b>	<a href="#">ITOCHU Corporation</a> <input type="checkbox"/>
<b>Settlement Annual</b>	March 31
<b>Annual Turnover</b>	Nonconsolidated: 352.2 billion Consolidated: 379.3 billion(The fiscal year ended March 2024)
<b>Employees</b>	Nonconsolidated: 429 employees Consolidated: 772 employees (As of March 31, 2024)
<b>Business Bases</b>	Domestic 16 Overseas 1
<b>Affiliated Companies</b>	<a href="#">IS ENGINEERING Co., Ltd.</a> <input type="checkbox"/> <a href="#">Maltics SANYO Co., Ltd.</a> <input type="checkbox"/> <a href="#">Unimatec Co., Ltd.</a> <input type="checkbox"/>
<b>Affiliated Banks</b>	Mizuho Bank, Ltd. The Bank of Mitsubishi UFJ, Ltd. Sumitomo Mitsui Banking Corporation.



## Directors, Executive Officers and Auditors

<b>President and Chief Executive Officer</b>	Hiroshi Sekino
<b>Senior Managing Director</b>	Yasushi Mori (Managing Officer of Wooden Materials Business)
<b>Managing Director</b>	Yoshinori Ueno (Chief of Housing Materials Division)
<b>Director</b>	Atsushi Otani (Chief of Value-Added Sales & Distribution Division)
<b>Director</b>	Daisaku Ogiwara (Chief of Fuctional Division No.1)
<b>Director (Part-time)</b>	Yusuke Takasaka
<b>Director (Part-time)</b>	Takashi Ozawa
<b>Executive Officer</b>	Yasuo Toyoda (Chief of Wood Products Division)
<b>Executive Officer</b>	Toshiyuki Shinmyo (Duputy Chief of Housing Materials Divison)
<b>Executive Officer</b>	Hajime Tamanyu (Chief of Coporate Planning Division)
<b>Executive Officer</b>	Hidekazu Watando (Chief of Functional Divison No.2)
<b>Executive Officer</b>	Tadayuki Ueda (Chief of Construction Materials Division)
<b>Executive Officer</b>	Yasuo Nakajima (Chief of Wood Based Panel Division)
<b>Executive Officer</b>	Minoru Araki (Assistant President)
<b>Audit &amp; Supervisory Board Member</b>	Reiko ayabe
<b>Audit &amp; Supervisory Board Member (Part-time)</b>	Yoshiki Nohara

# Business Locations

## Head Office

7F, Nomurafudosan Nihonbashi-Odemmacho Building., 1-4 Nihonbashi-Odemmacho, Chuo-ku, Tokyo-to 103-8419  
Japan  
Tel. +81-3-3661-3281 / Fax. +81-3-5695-7582

## Kansai Branch Office

10F, Midosuji MTR Bldg., 3-6-3 Awaji-machi, Chuo-ku, Osaka-shi 541-0047 Japan  
Tel. +81-6-6201-7311 / Fax. +81-6-6201-7320

## Other branch offices

### Japan

<b>Hokkaido Branch Office</b>	10F, Nihonseimei Sapporo Bldg., 4-1-1 Kita-Sanjo Nishi, Chuo-ku Sapporo-shi 060-0003 Japan Tel. +81-11-281-2641 / Fax. +81-11-210-2641
<b>Kita-Tohoku Office</b>	7F, Universe Aomori Bldg., 1-2-15 Honcho, Aomori-shi 030-0802 Japan Tel. +81-17-723-3121 / Fax. +81-17-731-1361
<b>Tohoku Branch Office</b>	3F, KDX Sendai Honcho Bldg., 2-3-10 Honcho, Aoba-ku, Sendai-shi 980-0014 Japan Tel. +81-22-222-1331 / Fax. +81-22-212-1351
<b>Kanto Branch Office</b>	7F, Taiyo Seimei Omiya Bldg., 3-42-5 Daimon-cho, Omiya-ku, Saitama-shi 330-0846 Japan Tel. +81-48-648-0601 / Fax. +81-48-648-0602
<b>Nagano Office</b>	2F, Nagano Central Bldg., 2-12-1 Minami Chitose, Nagano-shi 380-0823 Japan Tel. +81-26-405-8537 / Fax. +81-48-648-0602
<b>Niigata Branch Office</b>	6F, IMAIII Bldg., 1-7-7 Higashi-Odori, Chuo-ku, Niigata-shi 950-0087 Japan Tel. +81-25-243-7671 / Fax. +81-25-242-1317
<b>Shizuoka Office</b>	11F, Yamamura Bldg. Ote-cho, 2-20 Ote-cho, Aoi-ku, Shizuoka-shi 420-0853 Japan Tel. +81-54-254-4588 / Fax. +81-54-255-0756
<b>Chubu Branch Office</b>	5F, Nagoya ITOCHU Bldg., 1-5-11 Nishiki, Naka-ku, Nagoya-shi 460-0003 Japan Tel. +81-52-231-9110 / Fax. +81-52-202-0538



<b>Hokuriku Branch Office</b>	9F Kanazawa KS Bldg., 1-1-18 Hirooka, Kanazawa-shi 920-0031 Japan Tel. +81-76-262-6481 / Fax. +81-76-260-3653
<b>Shikoku Branch Office</b>	8F, Takamatsu Fukugin Bldg., 1-6-8 Ban-cho, Takamatsu-shi 760-0017 Japan Tel. +81-87-822-5255 / Fax. +81-87-821-2851
<b>Okayama Office</b>	4F, Taiyo Seimei Okayama Yanagi-machi Bldg., 1-1-27 Yanagi-machi, Kita-ku, Okayama-shi 700-0904 Japan Tel. +81-82-247-1291 / Fax. +81-82-545-6230
<b>Chugoku Branch Office</b>	5F, Nissay Hiroshima Bldg., 7-32 Naka-cho, Naka-ku, Hiroshima-shi 730-0037 Japan Tel. +81-82-247-1291 / Fax. +81-82-545-6230
<b>Kyushu Branch Office</b>	13F, Nihonseimei Hakata-ekimae Bldg., 3-2-1 Hakata-ekimae, Hakata-ku, Fukuoka-shi 812-0011 Japan Tel. +81-92-473-0011 / Fax. +81-92-441-3957
<b>Okinawa Office</b>	5F, Kumoji Central Bldg, Kumoji 1-3-1, Naha-shi, Okinawa 900-0015 Japan Tel. +81-98-866-3701 / Fax. +81-98-866-3701


## Overseas

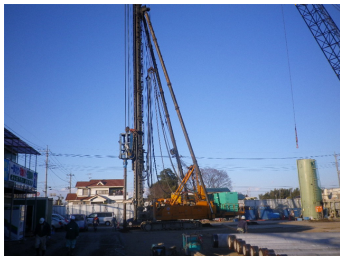
<b>Malaysian Branch Office</b>	Room2108, Level21, imperial Suites, Jalan Pos, 98000 Miri, Sarawak, Malaysia Tel. +60-85-437250 / Fax. +60-85-437202
--------------------------------	---

## Affiliated Companies

### IS ENGINEERING Co., Ltd.

**IS ENGINEERING continues to make daily strides toward its commitment to the Earth's environment and making contributions to society**

<b>Established</b>	January 1986
<b>Paid-in Capital</b>	50,000,000 yen
<b>Address</b>	3F, Ningyo-cho Center Bldg., 1-4-10 Nihonbashi Ningyo-cho, Chuo-ku, Tokyo-to 103-0013 Japan
<b>Contact Info</b>	Tel. +81-3-5614-5881 Fax. +81-3-5614-5886
<b>Website</b>	<a href="http://www.is-eng.com/">http://www.is-eng.com/</a> 
<b>Businesses</b>	Exterior wall construction, piling work, fireproofing construction, various other construction work, sales of construction materials



#### Piling Work

The company is a contractor for foundation work for buildings and civil engineering structures, and is fully capable of providing the correct solution for its customers' needs based on wide-ranging capabilities in countless piling types, including prefab concrete pilings, steel pilings and cast-in-place pilings.



#### Interior and Exterior Wall Work

The company is also a contractor for fireproofing construction as well as interior and exterior wall work, including for leased buildings, commercial facilities and condominiums, among others. It has taken wide-reaching steps to further enhance its design and construction capabilities as well as its quality and safety management practices in order to earn the trust of its customers.



## Maltics SANYO CO., LTD.


We support people in the good life that they seek.

<b>Established</b>	December 1960
<b>Paid-in Capital</b>	60,000,000 Yen
<b>Address</b>	Miyoshi 1840-5, Okayama-shi, Okayama 703-8261 Japan
<b>Contact Info</b>	Tel. +81-86-277-7165 Fax. +81-86-277-7790
<b>Website</b>	<a href="http://www.maltics-sanyo.net/">http://www.maltics-sanyo.net/</a> 
<b>Businesses</b>	Selling and construction of housing materials and equipment



We have established a system, including a logistics system, that facilitates the reduction of costs and construction time to satisfy customers.

Supports the future of professionals with reassurance, confidence, and past record of delivering the materials for many years.

<b>Established</b>	July 1987
<b>Paid-in Capital</b>	100,000,000 yen
<b>Address</b>	4-3-10 Sezaki, Soka-shi, Saitama-ken 340-0022 Japan
<b>Contact Info</b>	Tel. +81-48-921-1711 Fax. +81-48-921-1720
<b>Website</b>	<a href="http://www.unimatec.biz/">http://www.unimatec.biz/</a> 
<b>Businesses</b>	Sales of housing materials, housing equipment and appliances, do-it-yourself materials, as well as construction and installation services.



### Housing Materials Division

As the leading construction material wholesalers for the builder wholesale and exterior wall constructors mainly in metropolitan area, the company is working to enhance its service offerings in terms of logistics, construction work, quantity surveys and cost estimates.